

Fernco Puddle Flanges/Radon Barriers

- Installed on pipes during construction where water penetration has to be prevented
- Widely used as a radon barrier
- Quick and easy fitting
- Range of sizes available 'off-the-shelf'
- Can be made to bespoke sizes



Fernco Puddle Flanges are used to seal around the outside of pipes that are required to pass through concrete structures, such as tanks, manhole chambers, shafts, floor slabs and basements and are installed during construction.

Protection against water leakage

Pipes passing through concrete will not bond to the concrete and water can pass along the external surface of the pipe. Fernco Puddle Flanges act as a barrier to this flow, preventing water penetration. The seal is clamped onto the pipe and stops this direct route. The rubber body is compressed during the concrete pouring process, should the concrete shrink when curing the rubber will relax, maintaining a watertight seal between the concrete structure and pipe.

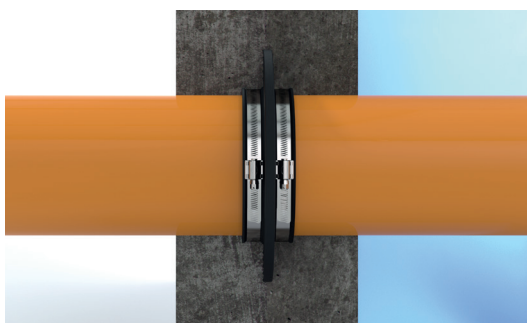
Protection against radon gases

Radon is a colourless, odourless radioactive gas. It is formed by the radioactive decay of the small amounts of uranium that occur naturally in all rocks and soils.

Radioactive elements decay and emit radiation. Any exposure to this type of radiation is a risk to health – radiation is a form of energy and can cause damage in living tissues increasing the risk of cancer.

– Public Health England

Studies have found that high level of radon can build up in living spaces if badly ventilated and therefore it's important to use radon barriers to reduce the amount of radon emitted into homes/building. Puddle Flanges can be used to reduce the risk of radon gases emitting via gaps on the outside of pipes.



Fit horizontally or vertically

for above or below ground applications

Strong stainless steel
clamp bands



High quality
EPDM coupling
body

Product Code	PFXXXX
Description	Fernco Puddle Flanges
Size Range	15mm +
Material	EPDM Rubber 1.4301 (304) Stainless Steel <i>Puddle Flanges with a different material makeup are available on request.</i>
Pressure Rating	Moulded Puddle Flanges are watertight to 10bar Fabricated Puddle Flanges are watertight to 5bar
Temperature Range	EPDM Puddle Flange -50°C to 80°C constant, 100°C intermittent
Tightening Torque	6Nm / 13Nm (Torque displayed on product label)

Moulded at these sizes			
Product Code	Product Ref	Size Range (mm)	Torque
PF015-025	FRK9602	15-25	6Nm
PF026-035	FRK9603	26-35	6Nm
PF036-044	FRK9404	36-44	6Nm
PF045-056	FRK9605	45-56	6Nm
PF057-071	FRK9606	57-71	6Nm
PF072-084	FRK9607	72-84	6Nm
PF085-101	FRK9609	85-101	6Nm
PF102-121	FRK9611	102-121	6Nm
PF122-138	FRK9612	122-138	6Nm
PF139-155	FRK9614	139-155	6Nm
PF156-176	FRK9616	156-176	6Nm
PF177-190	FRK9618	177-190	6Nm
PF191-212	FRK9420	191-212	6Nm
PF213-237	FRK9422	213-237	6Nm
PF245-270	FRK9425	245-270	6Nm
PF273-300	FRK9426	273-300	6Nm
PF304-341	FRK9431	304-341	6Nm

Note: Puddle Flanges are moulded smaller than the maximum pipe size, so in some cases will need to be stretched onto the pipe.

Fabricated to bespoke sizes				
Product Code	Product Ref	Min. Pipe Size (mm)	Max. Pipe Size (mm)	Torque
PF300	FRK9503	300	399	13Nm
PF400	FRK9504	400	499	13Nm
PF500	FRK9505	500	599	13Nm
PF600	FRK9506	600	699	13Nm
PF700	FRK9507	700	799	13Nm
PF800	FRK9508	800	899	13Nm
PF900	FRK9509	900	999	13Nm
PF1000	FRK9510	1000	1099	13Nm
PF1100	FRK9511	1100	1199	13Nm
PF1200	FRK9512	1200	1299	13Nm

Note: All fabricated Puddle Flanges are specially made to measure. Upon ordering please quote the outside diameter of the pipe in mm.

Notes:

- Fitted Puddle Flanges have an outside diameter 100/110mm larger than the pipe onto which they are installed (dependent on size).
- Puddle Flanges are, in some cases, supplied with the inside diameter of the seal smaller than the pipe outside diameter and may have to be stretched over the pipe during installation. Pipe Lubricant should be used and can be supplied with your order.
- Puddle Flanges do not provide axial restraint so they should not be used when axial loading on the pipe is present. The pipe has to be fully supported to withstand the concrete pouring process.
- Concrete cover should be 50mm against every surface around the Puddle Flange. Waterproof concrete should be used.

General Information

Quality, Standards and Approvals

Fernco has been certified by the British Standards Institution (BSI) as a company of assessed capability, with a quality management system which meets the requirements of BS EN ISO 9001:2015

Fernco UK, part of a global group of companies, are the leaders in wastewater connection innovation; utilising the most advanced methods and techniques for precision-manufactured products, all of which comply with or exceed relevant British and European standards to ensure reliability and sustainability.

Environment

Fernco operate Environmental Management Systems which are certified to ISO 14001: 2015.

Supply

Fernco are proud members of the Builders Merchants Federation (BMF). All Fernco products are supplied through a national and global network of distribution and merchant partners. For stockist details, contact Fernco.

Technical Support

Fernco have a team of product experts on hand to support all customers with technical support and advice.

Contact Fernco Technical Department:

Tel: +44 (0) 1226 344100

Email: technical@fernco.co.uk

Enquiries

UK Sales:

Tel: +44 (0) 1226 340 888

Email: sales@fernco.co.uk

International Sales:

Tel: +44 (0) 1226 344 105

Email: export.dept@fernco.co.uk

